



AMA
TASMANIA

Fortnightly eNews AMATasmania

September 16



AMA Tasmania

2016 Annual Parliamentary Dinner

Hon. Elise Archer, Speaker of the House of Assembly in the Parliament of Tasmania. And The President of the AMA in Tasmania Dr Stuart Day have pleasure in inviting you to attend AMA Tasmania's Annual Parliamentary Dinner for 2016.

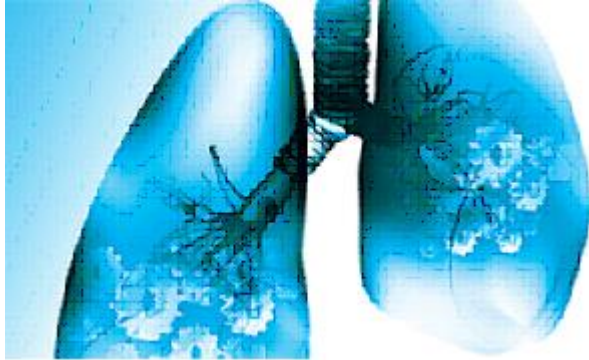
To be held in the Parliamentary Reception Hall, Parliament House, Hobart on Wednesday 21st September 2016

7.00 pm for 7.30 pm (\$70.00 per head - two-course meal and drinks)

RSVP - AMA House 6223 2047 or ama@amatas.com.au



Connecting Asthma Care



Connecting Asthma Care

Asthma Symposia Series
13 - 26 October 2016

REGISTER TODAY

Mentone Educational

The AMA has partnered with Mentone Educational to provide members with discounted, premium teaching materials, sourced globally for their quality and durability, to support you in your medical training.

AMA members can take advantage of a **10% discount on all products from Mentone Educational.**

Members can login now to access your discount

Not a member? [Join now](#) to take advantage of AMA member benefits!

10% Discount
on Anatomical Models and Charts
Exclusive to AMA members

AMA MENTONE EDUCATIONAL
ANATOMICAL MODELS AND EDUCATIONAL SUPPLIES

What does Mentone Educational offer?

Premium Quality Models – Mentone offers German made anatomical models designed to aid medical education. These quality products come with warranties of three-five years, but most medical professionals keep these items for life!

Anatomical Charts – Mentone's anatomical charts aid medical learning and are especially useful for medical students to support their studies.

Medical Skills Training – Mentone offers a large range of skills training products from suturing to injection training which assists medical students, and professionals, to refine their skills; especially useful for exam preparation. If you have any

questions about this offer, please don't hesitate to contact AMA Member Services via email or phone on 1300 133 655.

AMA (ACT) Advertising for Hospital Organiser

Hospital Organiser Employer: AMA (ACT) Limited

Work Type/s: Contract, Full Time

Classification/s: Advocacy & Campaigns, Unions & Workers Rights

Sector/s: Not For Profit (NFP)

Location: Canberra & ACT

Job posted on: 25 August, 2016.

Applications close: 09 September, 2016.

The AMA (ACT) seeks a Hospital Organiser to work with Doctors-in-Training (DITs) in the ACT public hospital sector. DITs are junior doctors from intern level, through resident medical officers to registrars. While many DITs are on specialist training programs, the majority are at a pre-vocational level undertaking their early post-medical school work.



[MORE DETAILS](#)

Development Scholarships for Women Leaders

\$4,000 scholarships are now being awarded to female leaders across the country to support the nationwide launch of **Executive Ready** – WLA's new flagship development program for mid to senior level managers.

Informed by the experiences of hundreds of talented and respected women across all industries, **Executive Ready** is a leadership accelerator designed to stretch participants and propel them towards executive level performance, behaviours and mindsets.

Developed by the country's foremost authority on women leaders and their unique needs, **Executive Ready** is for women who want to lead more confidently, transform the performance of their team and fully realise their future career/life potential. The program's content is purpose designed to extend leadership ability in preparation for future advancement.

Due to its applied nature and performance orientated outcomes the program is also appropriate for leaders looking to consolidate their current position and independent business owners looking for practical advice and strategy to transform the performance of their staff.

[To view the Executive Ready program prospectus Click here](#)

[To view WLA's suite of women's development programs Click here](#)

Please note: Scholarships cover approximately 40% of the total enrolment fee.

Nomination Process: To make a scholarship enquiry, please respond via email and include the details below. A program expert will then make contact to discuss current opportunities in your state: **Name: Position Title: Email: Phone:**

Rural Primary Health Services Commissioning Update

Tenders for rural primary health services commissioning **open** today (**Friday 2 September**) at **4 pm** and will **close** on **Friday 30 September** at **2 pm**.

General practices, health and community service providers and local councils in 21 Tasmanian local government areas* are eligible to tender for rural primary health services funding.

Primary Health Tasmania is encouraging collaborative approaches for tenders. You may be approached by other organisations who wish to collaborate on tender submissions, or you may wish to consider planning a tender application in your community.

Tender documents including the Commissioning Intentions Document and assessment criteria will be available following registration on Primary Health Tasmania's eTender portal at www.tenderlink.com/primaryhealthtas

It's easy to register, and there is no cost.

All enquiries regarding the scope of the tender must be submitted in writing via the portal's online forum. For probity reasons, we cannot provide advice about the tender to individual providers.

General enquiries (e.g. around access to the portal) can be directed to Julia Doyle at jdoyle@primaryhealthtas.com.au or on 6213 8200.

In addition to rural primary health services, Primary Health Tasmania is progressively introducing service commissioning in the following areas:

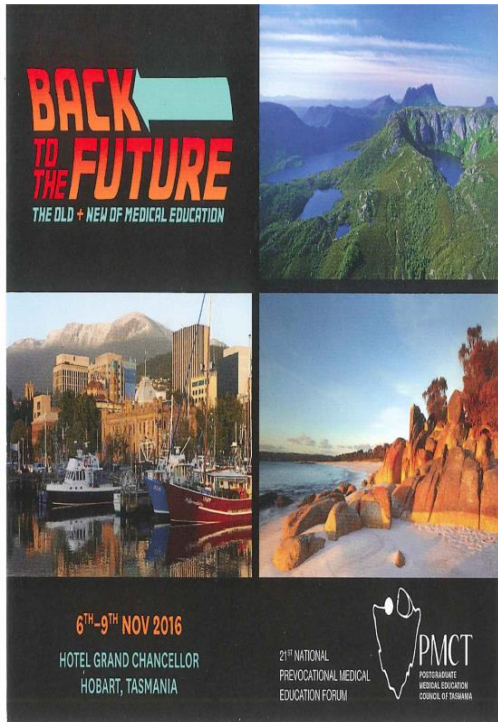
- Aboriginal health
- mental health
- drugs and alcohol and
- refugee health.

[Click here](#) to learn more about Primary Health Tasmania's commissioning activities.

For more information, contact us on 1300 653 169 or [send us a message](#).

* Burnie, Devonport, Launceston, Brighton, Glenorchy, Clarence, Sorell and Hobart local government areas are not eligible for rural primary health services commissioning. Eligibility is assessed on socioeconomic disadvantage (SEIFA Index for Australia), Accessibility/Remoteness Index of Australia (RA3-RA5) and population size.

**Back to the Future -
the old and new of medical education
21st National Prevocational
Medical Education Forum - PMCT**



SAVE THE DATE - 6TH - 9TH NOVEMBER
2016

HOTEL GRAND CHANCELLOR HOBART,
TASMANIA

News and Headlines

1. [NEED TO FOCUS ON BEHAVIOURAL INNOVATION TO SUPPORT PEOPLE WITH TYPE 2 DIABETES](#)
2. [PREGNANCY 'TOO LATE' FOR CONTROLLING OBESITY](#)
3. [GPs NEED TO BECOME CHAMPIONS FOR OSTEOPOROSIS TREATMENT](#)
4. [DIAGNOSE FAMILIAL HYPERCHOLESTEROLAEMIA EARLY FOR BEST OUTCOMES](#)
5. [NAURU AN "UNCONTROLLED HUMAN EXPERIMENT"](#)
6. [DOCTOR WORKFORCE INCREASINGLY SPECIALISED — AND MORE FEMALE CLINICIANS SPECIALISTS AND GPs](#)
7. [GP SUPPORT KEY TO SUCCESS OF HEALTH CARE HOMES TREATMENT](#)
8. [RECOMMENDATIONS FOR MALE HYPOGONADISM](#)
9. [AMSA: NEW MEDICAL WORKFORCE DATA AFFIRMS NEED FOR DOCTORS FOR RURAL COMMUNITIES](#)
10. [BEACH REPORTS SHOW GPs WORKING HARDER AND PROVIDING VALUE AS CORNERSTONE OF AUSTRALIAN HEALTH SYSTEM](#)
11. [FETAL ALCOHOL SYNDROME DISORDER \(FASD\) SHOULD BE RECOGNISED AS A DISABILITY](#)

Australian Medical Association Tasmania

147 Davey St Hobart TAS 7000

TEL +61 3 6223 2047 · FAX +61 3 6223 6469

EMAIL: ama@amatas.com.au

Follow us on Facebook 

AMATAS e-newsletter is compiled and distributed on a fortnightly basis to all AMA Tasmania members. We welcome contributions from members and others to make this newsletter lively, informative and successful. Contributions can be emailed to comms@amatas.com.au. All submissions require the authors name and contact details.