





TRANS-TASMAN CONFERENCE

Tasmania

7 TO 13 APRIL 2025

AMA.COM.AU/QLD

- 
- Decorative white wavy lines are overlaid on the top and bottom right corners of the image, creating a sense of movement and flow.
-  CPD ACCREDITED
 -  PRIVATE PRACTICE STREAM
 -  FAMILY FRIENDLY



Join us on the Apple Isle for the AMA Queensland Trans-Tasman Conference, for members who like to travel a bit closer to home. We are thrilled to hold the first of many conferences in Australia, New Zealand and surrounding areas, with support from our corporate partner Orbit World Travel.

The conference is a great chance to get away and visit the beautiful island state of Tasmania, known for its gourmet food, beautiful landscapes and unique wildlife while learning key issues facing the profession.

The CPD accredited program is for all doctors. We will have a breakout room focusing on building and supporting private practice. You will have the chance to hear from practice owners, GPs, specialists and industry leaders about the best ways to ensure the sustainability of your practice including financial strategies, technology, innovation, retention, workforce and environmental issues and solutions while improving healthcare quality and patient safety. The program will be refined and reshaped to best match delegates' needs, so register early so your interests can be considered.

Dr Nick Yim
President, AMA Queensland

Hobart

TASMANIA

Nestled off the southern coast of mainland Australia, Tasmania stands as a pristine gem in the vast expanse of the Southern Hemisphere. Known for its breathtaking landscapes, rich cultural heritage and diverse wildlife, Tasmania beckons travellers of all interests.

Hobart, Tasmania's capital and Australia's second-oldest city, is located on the southern coast, between the rugged Mount Wellington and the wide Derwent River. A perfect place to centre ourselves for a week of exploring and learning.

History comes alive in Hobart's well-preserved colonial architecture. Right on our doorstep are the historic sandstone warehouses of Salamanca Place, now housing many of the city's chic galleries, amazing restaurants, bars and shopping as well as the famous bustling markets on Saturdays. There is so much to see within a short walk.

Just a stone's throw beyond this unique urban delight is a gateway to Tasmania's natural wonder, with opportunities to hike, kayak, sail and explore.





Hotel

THE TASMAN HOTEL

Located in the heart of Hobart's vibrant waterfront precinct, The Tasman Hotel is an iconic destination blending historic charm with modern luxury. Originally established in 1847, this elegant hotel has been meticulously restored to offer guests a unique blend of heritage ambience and contemporary comforts.

The Tasman Hotel boasts a range of stylish accommodations, from rooms overlooking the harbour to spacious suites with panoramic views of Mount Wellington. Each room is elegantly appointed with modern amenities, ensuring a comfortable stay for discerning travelers. Its central location provides easy access to Hobart's top attractions, including Salamanca Place, MONA, and the Tasmanian Museum and Art Gallery.

Rooms allow two adults and one child, with interconnecting rooms available for larger families.

Family apartments

SULLIVAN'S COVE APARTMENTS

A family alternative to the conference hotel is the Sullivans Cove Apartments complex. Offering a selection of hand-picked two and three bedroom apartments on the vibrant waterfront, Sullivan's Cove is just a short stroll from the conference hotel.

The Sullivan's Cove Apartments are converted from the IXL jam factory built in 1891 and still feature the original enclosed cobbled courtyard. They offer unparalleled quality and location.

Family prices at Sullivan's Cove on request.





Itinerary* 2025

MONDAY 7 APRIL

- ▶ Group transfers to the conference hotel available from Hobart Airport. Pre-conference tour group arrives at hotel.
- ▶ **7PM – 9PM** Welcome Function: Enjoy a special introduction to Hobart at the conference hotel.

TUESDAY 8 APRIL

- ▶ **8.15AM – 1PM** Conference Session
- ▶ **1PM – 2PM** Lunch
- ▶ **2PM – 5.30PM** Afternoon Hobart orientation tour

WEDNESDAY 9 APRIL

- ▶ **8.15AM – 1PM** Conference sessions
- ▶ **AFTERNOON** Optional tour:
 - ▶ Half-day Richmond
 - ▶ Half-day Tastings Tasmania
 - ▶ Half-day Museum of Old and New Art (MONA)

THURSDAY 10 APRIL

- ▶ **DEPARTING HOBART AT AROUND 7.30AM**

We will drive for two hours to the Tasman Peninsula for morning tea before joining the three-hour Wilderness Cruise along the Tasman Peninsula Coastline. The cruise ends at historic Port Arthur for lunch and guided tours. The afternoon includes some free time to explore before returning to Hobart around 6pm.

FRIDAY 11 APRIL

- ▶ **8.15AM – 1PM** Conference sessions
- ▶ **AFTERNOON** Optional tour:
 - ▶ Half-day Richmond
 - ▶ Half-day cruise to the Iron Pot, Australia's oldest lighthouse
 - ▶ Half-day Museum of Old and New Art (MONA)

SATURDAY 12 APRIL

- ▶ **8.30AM – 1PM** Conference sessions
- ▶ **AFTERNOON** Optional tour:
 - ▶ Half-day Museum of Old and New Art (MONA)
 - ▶ Own arrangements Salamanca Markets (markets close at 3pm)
- ▶ **EVENING** Farewell function for all the family

SUNDAY 13 APRIL

- ▶ Scheduled group transfers to Hobart Airport available
- ▶ Post-conference departures

*Tour itinerary subject to final confirmation and changes.

Pre/Post Conference*

SUGGESTIONS

Tasmania is a treasure trove of experiences. In such a small area, you have breathtaking wilderness, pristine beaches and charming towns - throw in some history and you have it all! Depending on if you are travelling on your own, with a partner or family, if you are active or want to take it slow....Tasmania is a destination that will deliver.

OPTION 1 – POST CONFERENCE

Tasmanian escorted tour

EXPLORE TASMANIA – ESCORTED GROUP TOUR 8 DAYS/7 NIGHTS

DAY 1: BRUNY ISLAND EXPERIENCE SUNDAY 13 APRIL (B,L)

Meet at 8.15 am in the lobby of The Tasman Hotel for the drive south along the River Derwent shores to the coastal town of Kettering. Only a short ferry ride from the mainland but a world away, Bruny Island is a peaceful oasis where time seems to stand still. Enjoy a day of stunning scenery and indulge in the finest local produce, such as locally crafted cheese and beer, freshly shucked oysters, decadent chocolate and pure honey. Relax at an award-winning winery for a gourmet lunch. Explore Adventure Bay, where Captain Cook set his feet on land and be stunned by spectacular views of roaring coastal swell and beautiful bays. The area abounds with local wildlife, including curious white wallabies. A free evening for dinner.

Accommodation: The Tasman

DAY 2: HOBART – STRAHAN MONDAY 14 APRIL (B,L,D)

Depart The Tasman Hotel after breakfast for Mount Field National Park, the oldest in the state and home to some of the tallest trees. Then travel into the heart of Tasmania's World Heritage wilderness. Enjoy the fresh alpine air at Lake St Clair, Australia's deepest lake. Stop at Franklin River and the stunning Nelson Waterfalls before reaching the quaint West Coast village of Strahan. Group dinner.

Accommodation: Strahan Village Hotel, Strahan (Premier Harbour View room)

DAY 3: GORDON RIVER CRUISE TUESDAY 15 APRIL (B,L)

Cruise across Macquarie Harbour to the tranquil reaches of the Gordon River, which will surely be one of the highlights of your Tasmanian journey. The first stop is Heritage Landing, where you will walk among ancient temperate rainforest trees, many of which are Gondwanan relics. Explore the world of convicts on Sarah Island, the site of Tasmania's most remote and notorious convict settlement. Back in Strahan, explore the nearby sights such as the mighty Henry Dunes and the Hogarth Falls. A free evening for dinner.

Accommodation: Strahan Village Hotel, Strahan (Premier Harbour View room)

DAY 4: STRAHAN – CRADLE MOUNTAIN NATIONAL PARK WEDNESDAY 16 APRIL (B,L,D)

Depart Strahan for Queenstown and board the historic West Coast Wilderness Railway for a two-hour journey back into the region's rich mining history. Continue your journey to the UNESCO World Heritage-listed Cradle Mountain National Park, with a possible visit to the Philosopher's Falls via Waratah. Continue towards the alpine area and join your guide for a bushwalk in the forest before settling into your accommodation for the evening. Group dinner.

Accommodation: Cradle Mountain Lodge, Cradle Valley (Pencil Pine Cabin)

DAY 5: CRADLE MOUNTAIN NATIONAL PARK THURSDAY 17 APRIL (B,L)

Explore the many walks on offer inside the Cradle Mountain National Park. Perhaps do the Dove Lake Circuit and immerse yourself in the beauty of this majestic setting. Learn about native flora and fauna along the way, with highlights including the Ballroom Forest and lakeside beaches. In the afternoon, take the opportunity to get close to the iconic animal, the Tasmanian Devil, with a Joey Encounter at Devils@Cradle. Evening free for dinner at either Highland Restaurant or the local tavern.

Accommodation: Cradle Mountain Lodge, Cradle Valley (Pencil Pine Cabin)





DAY 6: CRADLE MOUNTAIN – MARAKOOPA – FREYCINET
FRIDAY 18 APRIL (B,L)

Depart Cradle Valley and meet Tasmania's North Coast. Travel through the village of Sheffield, a town filled with murals depicting Tasmanian life and history. Then visit the stunning Marakoopa Caves before arriving on the Freycinet Peninsula late afternoon. After a busy day, tonight will be free time for dinner.

Accommodation: Freycinet Lodge, Coles Bay (One room cabin)

DAY 7: WINEGLASS BAY – FREYCINET NATIONAL PARK
SATURDAY 19 APRIL (B,L,D)

After breakfast, embark on the award-winning four-hour Wineglass Bay Cruise in the Sky Lounge section on the upper deck. See the scenery from a different perspective and, with a bit of luck, an abundance of water-based wildlife such as dolphins, seals, albatrosses and more. Travel to Freycinet National Park, with ample time to explore the unsurpassed beauty of the Freycinet Peninsula and take an interpreted walk. Choose from a walk to the world-famous Wineglass Bay lookout for stunning photo opportunities, or a shorter clifftop walk around the Cape Tourville lighthouse. Farewell dinner for the group.

Accommodation: Freycinet Lodge, Coles Bay (One room cabin)

DAY 8: WINEGLASS BAY – FREYCINET PENINSULA – HOBART DEPARTURE
SUNDAY 20 APRIL (B)

It's time to bid farewell to Tasmania. An approximately 2.5-hour transfer takes you to Hobart airport where your guide says goodbye.

**\$4,745 PP TWIN SHARE,
 \$1,925 SINGLE SUPPLEMENT.**

THE TOUR INCLUDES:

Private touring with a local guide, transport in a comfortable and well-appointed vehicle, 7 x nights' accommodation, 7 x breakfast, 7 x lunch, 3 x dinner, Gordon River Cruise in Premier Upper Deck, two-hour West Coast Wilderness Railway 'Lynchford Express' in Wilderness Class, Joey Encounter at Devils@Cradle, entry to Marakoopa Caves, four-hour Wineglass Bay Cruise in Sky Lounge and National Parks Pass, transport and professional guide for the duration of your tour. (Excludes drinks with meals, items of a personal nature and any items not listed) (B = Breakfast, L = Lunch, D = Dinner)

Note: This tour is based on a minimum of 10 people to proceed as fully escorted. In the unlikely event these numbers are not met, an equivalent non-escorted tour with the same accommodation and locally-guided sights will be offered.



OPTION 3 – PRE OR POST CONFERENCE

Walking tour

- ▶ **THREE CAPE** Guided signature walk: 4 days/ 3 nights – moderate level. Private Lodge \$3,695 pp twin share. 4-7 April, 16-19 April
- ▶ **BAY OF FIRES** Guided signature walk: 5 days/4 nights – \$3,395 pp twin share. 14-18 April
- ▶ **WINEGLASS BAY/EAST COAST TASMANIA** Guided four-day sailing/walking journey – moderate level. Private yacht. 14-17 April. Six-day option 19-24 April, from \$3,475 pp twin share.

Other options, including self-guided walking tours are available.

APPROXIMATE TRAVELLING TIMES AND ROUTE NUMBERS BETWEEN DESTINATIONS



OPTION 2 – PRE OR POST CONFERENCE

Self drive tour

DAY 1 Arrive into Hobart and collect a car from the airport, ready for your week exploring Tasmania. Stay overnight in Hobart.

DAY 2 Hobart to Coles Bay/Freycinet (2.5 hours plus stops) – Drive up the east coast of Tasmania, taking time to stop at Spiky Bridge and perhaps a leisurely lunch at one of the local wineries or a wade in the water at Oyster Bay. Stay overnight at Freycinet.

DAY 3 Freycinet – Experience Tasmania’s oldest National Park with walking trails for all levels. Take a scenic flight or cruise to view the majestic Wineglass Bay. Stay overnight at Freycinet.

DAY 4 Freycinet to Launceston (2.5 hours direct or 5 hours via Saint Helens plus stops) – Stop at beautiful seaside village of Bicheno before heading north into the Bay of Fires region (named from the incredible orange granite rock formations), before heading inland. Stay overnight at Launceston.

DAY 5 Launceston to Cradle Mountain (2 - 3 hours plus stops) Take a leisurely drive up through the Tamar Valley. You might like to see the breeding farms or Seahorse World at Beauty Point. Stay overnight at Cradle Mountain.

DAY 6 Cradle Mountain to Queenstown or Strahan (1.5 – 2 hours plus stops). Head out by foot, e-bike or even horseback to see one of the many trails in Cradle Mountain/Lake St Claire. Dove Lake is well worth the visit before taking a short drive to overnight in Queenstown or Strahan.

DAY 7 Queenstown/Strahan. Set out on your six-hour Gordon River Cruise from Strahan including lunch and a chance to walk at Heritage Landing and Sarah Island. Stay overnight in Queenstown or Strahan.

DAY 8 Queenstown/Strahan to Hobart (3.5 hour plus stops) Board the Lynchford Express at West Coast Railway. The heritage train departs Queenstown Station and takes the 20-minute journey to Lynchford, once a centre for pioneers, adventurers and those with gold fever. Continue on to Hobart.

Note: These self-drive options are as a guide only and can be catered to your requirements. Costings are on request based on your personal requirements.





Freycinet and Wineglass Bay

OPTION 4 – PRE OR POST CONFERENCE

FREYCINET LODGE

Freycinet Lodge is nestled into Freycinet National Park, overlooking the blue waters of Great Oyster Bay with The Hazards Mountain range as a backdrop.

A wide range of accommodation is available just minutes away from Wineglass Bay, with cabins starting from \$261 per night to the Coastal Pavillion, which offers a superb blend of natural simplicity and ultimate comfort, from \$631 per night.

OR FOR ULTIMATE LUXURY

OPTION 5 – PRE OR POST CONFERENCE

SAFFIRE FREYCINET

Saffire Freycinet is an award-winning all-inclusive luxury resort, situated in the heart of Tasmania's stunning Freycinet National Park. A gem of Coles Bay, Saffire offers the ultimate experience of luxury accommodation in Australia. Experience relaxation in this lodge, set against the stunning backdrop of Wineglass Bay.

Saffire is distinct in its design and features, as well as being set apart by its approach to individually-tailored experiences and packages. It features 20 suites with breathtaking views of The Hazards mountains, a luxury day spa and unforgettable culinary offerings and experiences. Saffire is so much more than a getaway resort.

All-inclusive from \$3,000 per luxury suite per night for two adults.

All meals, drinks and signature experiences. Minimum of two nights. Three-night special offers may be on offer.

Golfing

Tasmania is home to two of Australia's best links golf courses. Located in the north, Barnbougle Dunes Golf Links and Barnbougle Lost Farm Golf Links can be combined with a relaxed visit to the Tamar Valley Wineries.

OPTION 6 – PRE OR POST CONFERENCE

BARBOUGLE DUNES GOLF LINKS – AUSTRALIAN RANKING 3 (GOLF AUSTRALIA)

Located along the wild and remote coast of Northeast Tasmania, The Dunes Course at Barnbougle Golf Resort has gained a reputation as one of the world's most impressive links courses since its opening in 2004. Designed by US golf architect Tom Doak and former Australian pro golfer Michael Clayton, the course is a spectacular amalgamation of Mother Nature and human craftsmanship. The quirky par three seventh hole, nicknamed "Tom's little devil", demands a precise shot from a slightly elevated tee onto a tiny, upturned green which can be difficult in windy conditions. The fourth hole boasts the largest bunker in the entire Southern Hemisphere. Stay in classic beach-front cottages and four-bedroom villas and dine at the clubhouse with its superb views.

OPTION 7 – PRE OR POST CONFERENCE

BARBOUGLE LOST FARM GOLF LINKS – AUSTRALIAN RANKING 4 (GOLF AUSTRALIA)

Barnbougle Lost Farm is one of Australia's most visually spectacular golfing experiences. Established in 2010 to complement the fairways of The Dunes, Lost Farm boasts some distinct similarities and yet is noticeably different to its sister course. On the steep, dramatic sand dunes of the Tasmanian coast, golf architect Bill Coore created a non-traditional 20-hole course, with greens dispersed among the dunes and along the coastline. Teeing off from coastal heathland and playing inland beside the Forester River, the fifth hole is a particular highlight, with the possibility of a birdie or eagle within sight. Lost Farm Lodge offers stylish accommodation overlooking the golf course or the ocean and the restaurant sources the finest Tasmanian produce and wines for memorable meals.

Note: Prices to be quoted on your individual requirements.



The Tasman Hotel PACKAGE

LAND PACKAGE

\$3,210**

LAND PACKAGE PRICE
PER PERSON – TWIN SHARE

\$4,305**

LAND PACKAGE PRICE
PER PERSON – SINGLE

THE TASMAN HOTEL PACKAGE INCLUDES**

- ▶ Six nights' accommodation (twin share) at The Tasman Hotel in a Deco King room
- ▶ Daily breakfast
- ▶ Transfers – return group transfers on day one Hobart Airport to conference hotel and day seven from the conference hotel to Hobart Airport.
- ▶ Four half-day conference sessions, including morning tea
- ▶ One lunch Tuesday
- ▶ Welcome function with entertainment, including food and beverages
- ▶ Tour – half-day orientation tour of Hobart
- ▶ Tour – full-day sightseeing at Port Arthur
- ▶ Farewell dinner with entertainment, including food and beverages

Contact Orbit World Travel for a selection of airfare choices.

** Package subject to change

** Due to varied delegate departure points, airfares are not included. These can be added in and personalised to your requirements by Orbit World Travel.

*** If you require a different/varied room configuration or land package please contact Orbit World Travel.

Note: This land package excludes airfares, registration fees, travel insurance, pre and post conference arrangements, optional tours and any other items not listed.

For the families ***

LAND PACKAGE

AVAILABLE UPON REQUEST

FAMILY ACCOMMODATION OPTIONS**

Interconnecting rooms available at the Tasman Hotel, our conference hotel, or

Sullivan Cove Apartment options, subject to limited availability

- ▶ 2 bedroom apartment (maximum 4 people – 2 adults and 2 kids) package total surcharge \$276 per adult twin share
- ▶ 2 Bedroom Penthouse Apartment (maximum 5 – 2 adults and 3 kids) package total surcharge \$576 per adult twin share
- ▶ 3 bedroom Penthouse Apartment (maximum 5 – 2 adults and 3 kids) package total surcharge \$876 per adult twin share

Note: based on room only, no breakfast included. Car parking if required \$10 per night (small vehicle).

Land package for children additional to include tours and functions, price on application based on age of child.

School Holidays fun!

Please note Orbit World travel is looking to create a kids club for this conference.

Activities may include:

- ▶ Scavenger Hunt
- ▶ Amazing Race
- ▶ Circus skills
- ▶ Bonorong Wildlife Sanctuary



Kids Club PACKAGE

AMA QUEENSLAND CONFERENCE

KIDS AND TEEN CLUB

\$200**

PER DAY PER CHILD

KIDS CLUB PACKAGE INCLUDES**

▶ 4 x half day supervised programs (during conference session times), including Bonorong Wildlife Park, TMAG (Tasmanian Museum and Art Gallery), Hobart Amazing Race and Scavenger Hunt.

Note: (children aged 5 – 17 years, 1 carer per 5 children under 13, Age appropriate activities based on numbers, subject to a minimum of 5 children). Includes all related supervision, transport and entrance fee costs, morning tea. Departure point – The Tasman Hotel.

Registration FEES

Registration fees for the 2025 AMA Queensland Annual Conference are shown below and early-bird rates are available until 30 August 2024.

CATEGORY	EARLY-BIRD PRICE Ends 30 August 2024	REGULAR PRICE
Doctor – AMA member	\$570	\$700
Doctor – non-AMA member	\$1,190	\$1,360
Doctor in training	\$240	\$280
Associate conference participant [^]	\$350	\$390
Non-conference participant [†]	\$110	\$220
Child	\$90	\$100

[^] Associate conference participant includes: practice managers, registered nurses, industry professionals, other professionals.

[†] Non-conference participant includes: life partners, family members, friends who do not fit within other registration categories.

TERMS AND CONDITIONS

RESERVATIONS AND PAYMENTS

Your reservation will be confirmed in writing upon receipt of the Registration Form and deposit of \$950 per person. Final payment is required by 31 January 2025.

BOOKING AMENDMENTS

No fees will be charged for changes made prior to final payment. Once final payment has been received, changes to airline reservations are subject to particular airline rules and conditions but a minimum fee of \$100 per ticket will apply. Changes to other components of this package will be on request basis and applicable fees will be advised at that time. Once tickets have been issued, name changes are treated as a cancellation by many airlines, the fee will be on application and will vary based on the airline. Please ensure the booking name matches the photo ID details exactly.

CANCELLATIONS

Travel insurance is essential and should be requested at the time of registration. Subject to policy conditions, travel insurance will cover cancellation due to unforeseen reasons. Notification of cancellation to Orbit World Travel must be received in writing before any action can be taken. Cancellation of travel package: Cancellation prior to final payment date – loss of deposit (NON REFUNDABLE); cancellation up to 45 days prior to departure – 50%; cancellation within 45 days of departure – no refund.

IDENTIFICATION

Ensure you travel with a photo ID that matches your flight tickets.

PRICE CHANGES

The package price is subject to change due to influences outside Orbit World Travel's control, including (but not limited to) airport taxes, government charges and airline fuel surcharges. Orbit World Travel is a fully accredited member of peak industry bodies IATA and ATAS, and an associate member of the CT Partners group of companies. These memberships provide our customers surety around our trading practices, standards and consumer protection.

ITINERARY AND SCHEDULES

Although no changes are anticipated, this itinerary may be altered or modified as required without notice or liability of change. Orbit World Travel is acting in the capacity of an Agent and cannot be held responsible for the services of operators included in this package.

REGISTRATION OPTIONS

Due to the costs of facilitating a conference, should you opt to register as a conference delegate only and not take the land package listed AMA Queensland will surcharge the standard registration fees by \$750 per conferencing delegate. This will allow attendance to Conference sessions only and will not include attendance of any functions, meals or tours as listed in the package. We highly recommend discussing your requirements, such as apartments, with Orbit World Travel as your package can be varied and include all social functions.

PRIVACY

Your details are kept confidential and will not be provided to any other source.

PANDEMIC POLICY

During such times as COVID-19 or any other future event where unexpected border closures and travel restrictions may occur changes may have to apply. Policies like this are outside the control of Orbit World Travel, AMA Queensland and the travel providers. Should there be a travel restriction/ban or should the conference planning committee have concerns over the heightened risk to its members, a decision may be made to alter or cancel this conference. Should a complete cancellation of the conference occur due to any such unforeseen policy, we commit to refunding delegates any funds that are received back from suppliers. Should an alternative new travel date be arranged by the conference planning committee, your payment will be transferred automatically. Alternatively, standard cancellation fees will apply.

Conference REGISTRATION

REGISTRATION TYPES:

- A – DOCTOR (AMA MEMBER)
- B – DOCTOR (NON-AMA MEMBER)
- C – DOCTOR IN TRAINING
- D – ASSOCIATE CONFERENCE PARTICIPANT
- E – NON-CONFERENCE DELEGATE
- F – CHILD

Please note that names must match your identification exactly for accurate ticketing.*

Are you interested in the Private Practice Masterclass? (no additional cost) Yes No

If yes, are you a Practice Owner Work in a practice

MAIN DELEGATE 1: Registration type: _____ Title: _____ First name: _____

Middle name (all): _____ Surname: _____

Preferred name on name tag: _____ Nationality: _____

Postal address: _____

Suburb: _____ State: _____ Post code: _____

Phone (Home): _____ Phone (Business): _____

Mobile: _____ Email: _____

Tax invoice made out to: _____

Special dietary/medical requirements: _____



DELEGATE 2: Registration type: _____ Title: _____ First name: _____

Middle name (all): _____ Surname: _____

Preferred name on name tag: _____ Nationality: _____

Postal address: _____

Suburb: _____ State: _____ Post code: _____

Phone (Home): _____ Phone (Business): _____

Mobile: _____ Email: _____

Tax invoice made out to: _____

Special dietary/medical requirements: _____



DELEGATE/FAMILY 3: Registration type: _____ Title: _____ First name: _____

Middle name (all): _____ Surname: _____

Preferred name on name tag: _____ Nationality: _____

Postal address: _____

Suburb: _____ State: _____ Post code: _____

Phone (Home): _____ Phone (Business): _____

Mobile: _____ Email: _____

Tax invoice made out to: _____

Special dietary/medical requirements: _____



DELEGATE/FAMILY 4: Registration type: _____ Title: _____ First name: _____

Middle name (all): _____ Surname: _____

Preferred name on name tag: _____ Nationality: _____

Postal address: _____

Suburb: _____ State: _____ Post code: _____

Phone (Home): _____ Phone (Business): _____

Mobile: _____ Email: _____

Tax invoice made out to: _____

Special dietary/medical requirements: _____



Note: If selecting family travel, an Orbit World Travel representative will contact you to discuss options directly.

+ Reissue fees will apply in the event that ticket details are amended subsequent to ticket issue.

Please see return details for this form overleaf.

Accommodation AND Travel

ACCOMMODATION PREFERENCES

- Single Double share (couple) Family* Sullivan Cove Apartments
 Twin share: Name if sharing with friend on separate registration: _____

PREFERRED AIRLINE FOR TRAVEL

- Qantas Virgin Jetstar

CLASS OF TRAVEL

- Economy Business

Preferred itinerary including dates: _____

PRE OR POST CONFERENCE TOUR PREFERENCES:

- OPTION 1** Tasmanian Escorted Tour (post only)
OPTION 2 Self Drive Tour **OPTION 3** Walking Tour
OPTION 4 Freycinet Lodge **OPTION 5** Saffire Freycinet
OPTION 6 Barnbougle Dunes Golf Barnbougle Lost Farm Golf
 Other? _____

OTHER TRAVEL INFORMATION OR SPECIAL NEEDS:

.....

DEPOSIT AND PAYMENT DETAILS

Please note \$950 per person deposit for travel is required on receipt of this form.

\$950 x * _____ = \$ _____,00 deposit

* Total number of travellers including adults and children.

Please charge my credit card:

- Visa AMEX Mastercard

For the amount of \$ _____

Card number: (please print clearly)

_____ CCV: _____ Exp date: _____

Name: _____

Signature: _____ Date: _____

Cheque enclosed for: \$ _____
(payable to Orbit World Travel Pty Ltd)

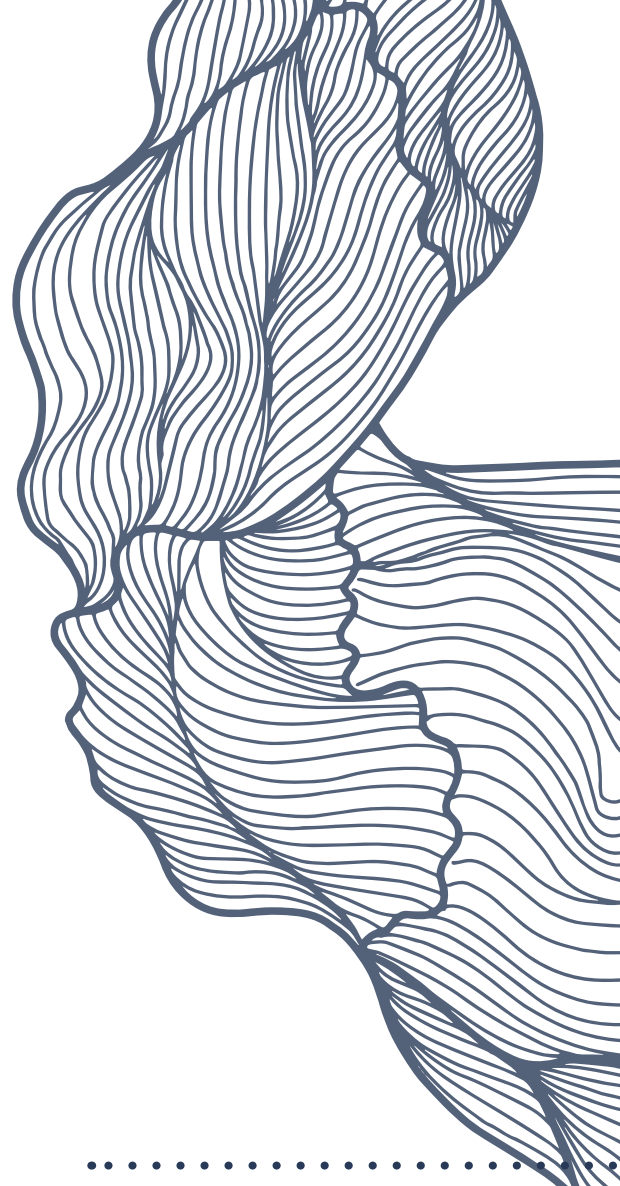
Direct deposit: contact Orbit World Travel at amaq@orbittravel.au

Conference registration will be invoiced separately by AMA Queensland.

DECLARATION

I acknowledge that I have read and accepted the conditions of this package.
I acknowledge that I will be given a personalised summary of costs from Orbit World Travel on finalisation of my itinerary.

Signature: _____ Date: _____



Early Bird PRIZE

- ▶ Tasmania Produce Hamper – Valued at over \$500
- ▶ Free Option tour of your choice for 2
- ▶ Register by 30 August 2024



**PLEASE RETURN TO
ORBIT WORLD TRAVEL:**
PO Box 4943, GCMC QLD 9726

PHONE: 1300 262 885

DIRECT LINE: 07 5556 7267

EMAIL: amaq@orbittravel.au

Lic No. TAG1502 ABN 920 806 296 989